

CERTIFICATE OF LOCATION OF GOVERNMENT CORNER

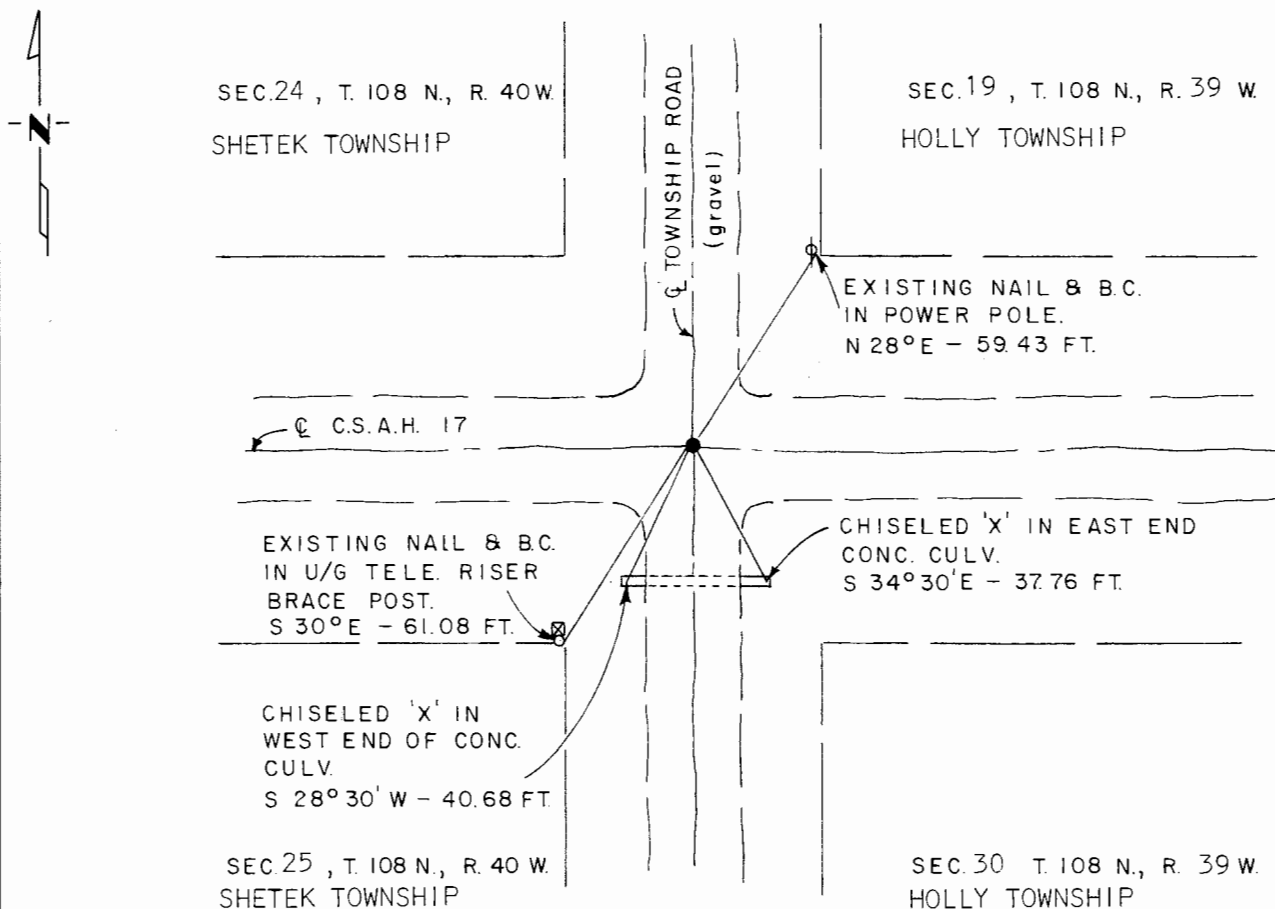
- Southeast Corner of Section 24, Township 108 N., Range 40 W., 5th P.M.

STATE OF MINNESOTA, County of Murray

At the corner location shown on the sketch:

- On 9-25-80 found on old iron valve flush with road surface per Co. record.
DATE
 witness ties.
 - left monument as found, lowered monument, removed monument (explain)
- On _____ placed a _____
DATE

SKETCH OF REFERENCE TIES



I hereby certify that this document and the data contained herein was prepared by me or under my direct supervision.

[Signature] 12/28/81
SIGNATURE DATE

Registration No. 2967
 Land Surveyor, Professional Engineer
 County Surveyor, County Engineer

OFFICE OF THE COUNTY RECORDER
 County of Murray

I hereby certify that this document was filed in the Co. Recorders office at 10 A .M. on the 18th day of February A.D., 1982

County Recorder *Willard W. Ohme*

By _____, Deputy

DOCUMENT NO. _____